

GR15-G-2

HIGH VOLTAGE FAST RECOVERY RECTIFIERS

PRV : 1500 Volts
Io : 0.5 Ampere

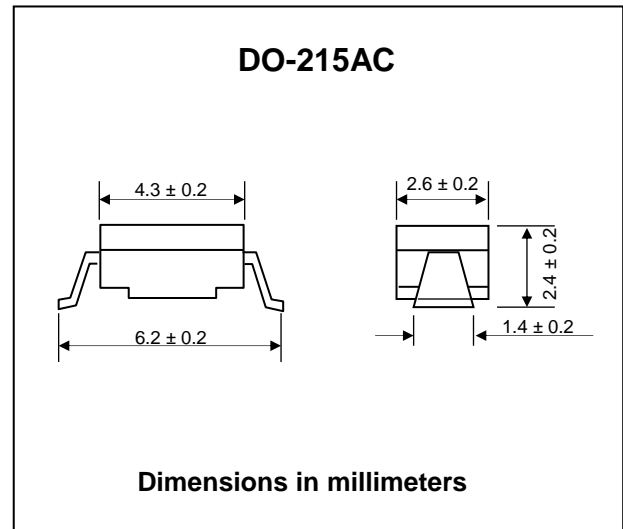
FEATURES :

- * Glass passivated junction chip
- * High current capability
- * High surge current capability
- * High reliability
- * Low reverse current
- * Low forward voltage drop

* Pb / RoHS Free

MECHANICAL DATA :

- * Case : DO-215AC Molded plastic
- * Epoxy : UL94V-O rate flame retardant
- * Polarity : Color band denotes cathode end
- * Mounting position : Any
- * Weight : 0.060 gram (Approximately)



MAXIMUM RATINGS AND ELECTRICAL CHARACTERISTICS

Rating at 25 °C ambient temperature unless otherwise specified. Single phase, half wave, 60 Hz, resistive or inductive load.
For capacitive load, derate current by 20%.

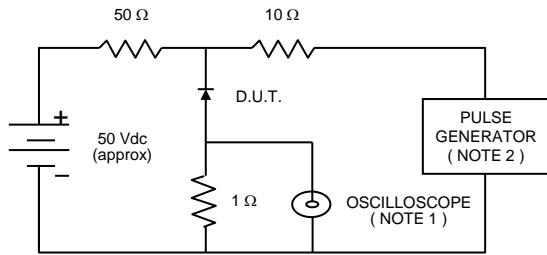
RATING	SYMBOL	GR15-G-2	UNIT
Maximum Recurrent Peak Reverse Voltage	V_{RRM}	1500	V
Maximum RMS Voltage	V_{RMS}	1050	V
Maximum DC Blocking Voltage	V_{DC}	1500	V
Maximum Average Forward Current	$I_{F(AV)}$	0.5	A
Maximum Peak Forward Surge Current, 8.3ms Single half sine wave superimposed on rated load (JEDEC Method)	I_{FSM}	20	A
Maximum Forward Voltage at $I_F = 0.1$ A	V_F	2.0	V
Maximum DC Reverse Current at Rated DC Blocking Voltage	I_R	5.0	μA
	$I_{R(H)}$	50	μA
Maximum Reverse Recovery Time (Note 1)	T_{rr}	300	ns
Typical Junction Capacitance (Note 2)	C_J	5	pF
Junction Temperature Range	T_J	- 65 to + 150	°C
Storage Temperature Range	T_{STG}	- 65 to + 150	°C

Notes :

- (1) Reverse Recovery Test Conditions : $I_F = 0.5$ A, $I_R = 1.0$ A, $I_{rr} = 0.25$ A.
- (2) Measured at 1.0 MHz and applied reverse voltage of 4.0 Vdc
- (3) Marking code "15G2" on diode

RATING AND CHARACTERISTIC CURVES (GR15-G-2)

FIG.1 - REVERSE RECOVERY TIME CHARACTERISTIC AND TEST CIRCUIT DIAGRAM



NOTES : 1. Rise Time = 7 ns max., Input Impedance = 1 megaohm, 22 pF.
 2. Rise time = 10 ns max., Source Impedance = 50 ohms.
 3. All Resistors = Non-inductive Types.

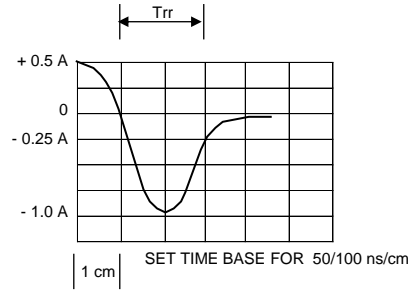


FIG.2 - DERATING CURVE FOR OUTPUT RECTIFIED CURRENT

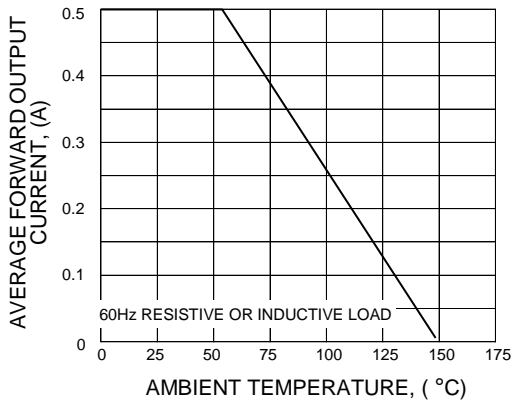


FIG.3 - MAXIMUM NON-REPETITIVE PEAK FORWARD SURGE CURRENT

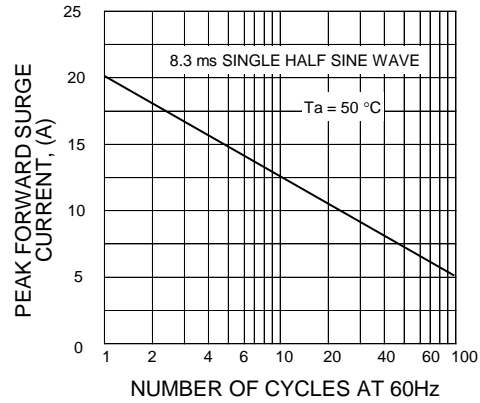


FIG.4 - TYPICAL FORWARD CHARACTERISTICS

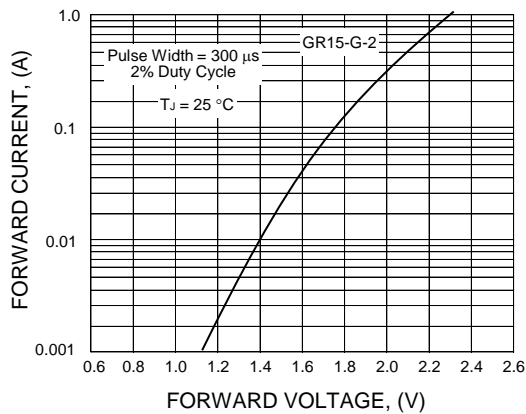


FIG.5 - TYPICAL REVERSE CHARACTERISTICS

